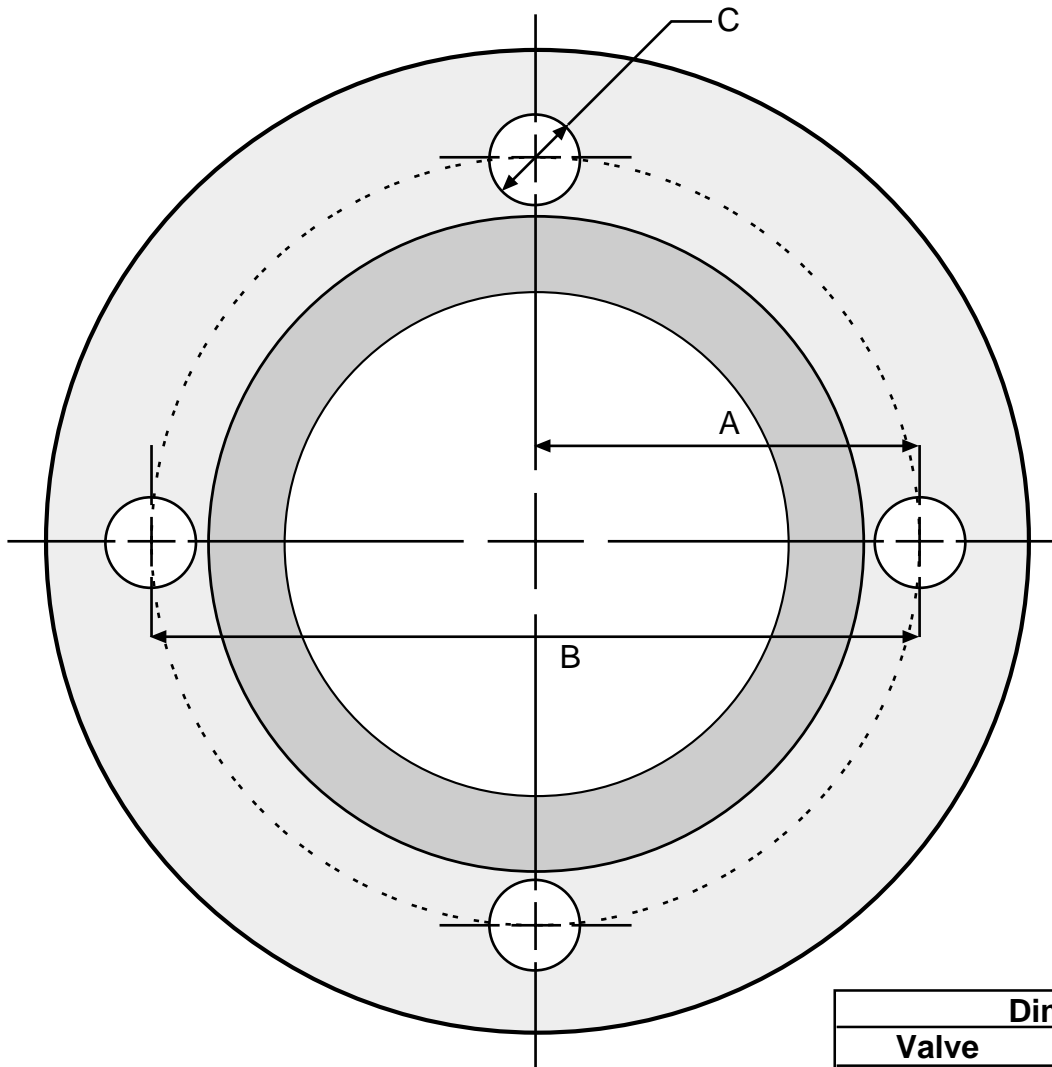


Date: 11/10/00, (CM)

Subject: 4-way valve flange

Flange Dimensions

The 2 1/2 inch (024), 3 inch (025) and 4 inch (026) four way mixing valves do not include companion flanges, bolts, nuts, or gaskets. When installing one of the above valves, you must supply the flanges separately. Below is a diagram of a typical flange on the above valves with dimensions. You should use these dimensions when purchasing companion flanges in order to ensure that they will match correctly.



Dimensions			
Valve	A	B	C
2 1/2" (024)	2 3/4"	5 1/2"	3/4"
3" (025)	3"	6"	3/4"
4" (026)	3 3/4"	7 1/2"	3/4"

Sincerely yours,
tekmar Control Systems Ltd.